

MS SQL for DocuWare

Product Info



Microsoft®
SQL Server®

Use Microsoft Reporting Services with DocuWare

Enjoy the seamless connection of SQL Server 2014/2016 to DocuWare. The database is stable, powerful and provides options for analyzing database access with the integrated Reporting Services.

In addition to a stable and high-performance database, Microsoft SQL Server 2014/2016 also has features that make monitoring especially simple and fail-safe: the restoration of individual database records online is trouble-free as only the records to be restored cannot be accessed by users during maintenance. The advantage: database downtimes are reduced and the availability of the data is increased. And thanks to the integrated high-availability feature the database can easily be imported into another system: thereby enabling an automatic failover.

Benefits

- Seamless connection to DocuWare: produces full performance and stability
- Easy data analysis uses integrated Reporting Services
- Online restoration of data records results in high availability of the database

Easy Upgrade

If you are currently using the database supplied by DocuWare and you are finding it too slow because of large volumes of data, you can comfortably upgrade to MS SQL. How-to instructions are provided to help you. We recommend an upgrade for volumes from around one million documents without fulltext or 200,000 pages with fulltext. You can find the system requirements for MS SQL 2014/2016 on the Microsoft websites.
<http://msdn.microsoft.com/de-de/library/ms143506.aspx>

Affordable License Model

Through DocuWare you can obtain two different license types for MS SQL at attractive prices.

Access License for Users - Client Access License (CAL)

For this model you need a client access license for each registered DocuWare user. No additional server license is required. This option is advantageous if you are using several SQL servers for DocuWare.

However, the use is restricted exclusively to DocuWare, although third-party programs can have read access to the database.

Pro Core Licensing

In connection with DocuWare, this model licenses the SQL server in the enterprise or standard version. All cores of the server processors must be licensed; at least four cores per physical processor. The license can be used by an unlimited number of users and is not limited to usage with DocuWare software.

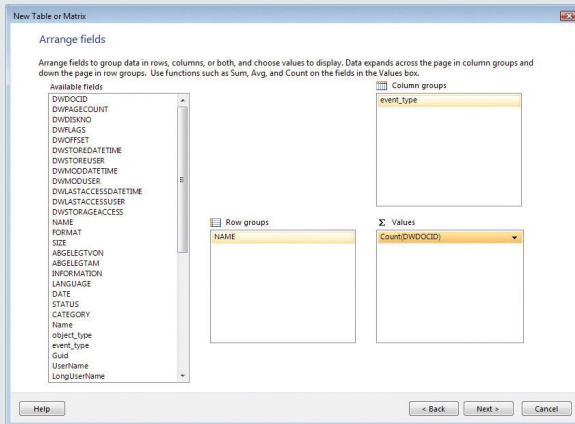


You can find more information on the Microsoft MS SQL license models on the Microsoft website.

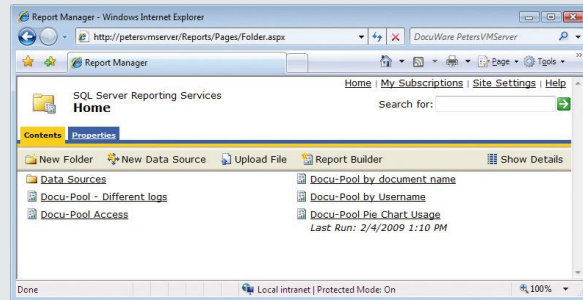
<https://www.microsoft.com/en-gb/Licensing/product-licensing/sql-server.aspx>

Business Intelligence

Reporting Services are integrated directly in SQL Server for analyzing data in the context of business intelligence. In connection with DocuWare logging, accesses to documents in DocuWare can be analyzed in terms of the frequency of opening, saving, and editing the index entries for individual documents or document types in absolute figures or as percentages. You can also create a report of access to documents by department and so enable department-based billing. Once the reports have been defined, they can be created automatically at regular intervals and sent by email or even exported to a Windows data share. You can also download new analyses from the Reporting Services website at any time. Reports can be exported in Excel or PDF format, so you can continue working on them easily.



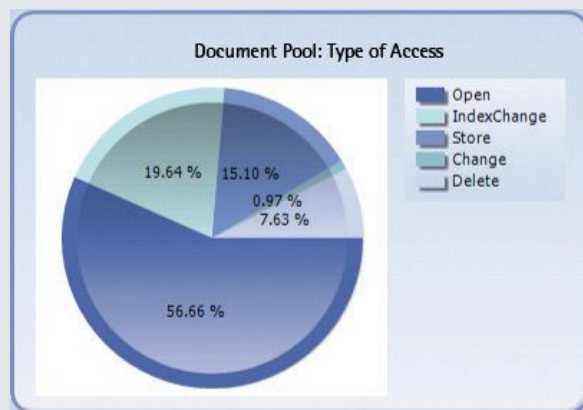
When defining a report, select the DocuWare fields to be included in the report, for example Document name.



Overview of all defined reports on the Reporting Services website. Create up-to-date reports from here at the click of a button.

NAME	Change	IndexChange	Open	Store	Total
A.B.S. GLOBAL FACTORING AG	0	9	2	1	12
AMERICAN ENGINEERING TESTING, INC.	0	0	1	1	2
AMERICAN FOOD SERVICE	0	0	1	1	2
AVON COSMETICS	0	0	1	1	2
BEUC - BOEING EMPLOYEES' CREDIT UNION	1	1	2	1	5
BILFINGER BERGER INDUSTRIAL SERVICES AG	0	0	4	1	5
BLACKWELL'S BOOK SERVICES	0	0	1	1	2
BOZEMAN DEACONESS HOSPITAL	0	0	1	1	2
BRÜHL UND SIPPOLD GMBH	0	0	3	1	4
DOCUWARE INFO 1	0	1	2	1	4
DOCUWARE INFO 10	0	0	4	1	5
DOCUWARE INFO 11	0	15	6	1	22
DOCUWARE INFO 12	0	0	1	1	2
DOCUWARE INFO 13	0	0	3	1	4
DOCUWARE INFO 14	0	0	1	1	2
DOCUWARE INFO 15	0	0	1	1	2

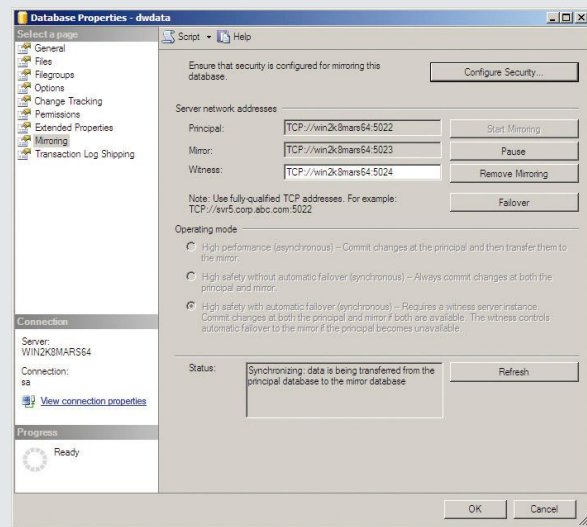
Table report of document access to the individual documents listed by name, here using the example of the document pool file cabinet available on the DocuWare website pages.



Percentage report of different types of document access within a file cabinet: storage, opening, editing the index entries, editing the document, and deletion.

Functions

- Administer settings centrally in the Management Studio
- Simple and reliable backup and restore
- Backup as scheduled tasks: complete database backup and/or differential backup
- High-availability system with to easy set up and configurable mirrored SQL Server, no additional license required (Microsoft sets restrictions on the physical distance between the server and mirrored server. For exact details, please contact Microsoft.)
- Cluster system are possible with additional license
- Easy analysis options, e.g. performance problems
- The SQL server makes its own suggestions for improving the database settings
- Reporting: easily create reports on document access and then export as PDF or Excel
- Easy to use with intuitive user interface



MS SQL Server has a high-availability feature. This makes it very simple to mirror a database on another system: thereby enabling an automatic failover.